

FOR LEASE **OFFICE**

Bank of America Financial Center

805 Broadway Street, Vancouver, WA 98660

Lobby Renovations Under Construction!



- Vancouver's Largest Office Tower
- On-Site Athletic Club
- New Water Lily Café on ground level
- River and Mountain Views
- Adjacent to Public Transportation
- Walking Distance to Government Offices



| Floor | Rentable SF | Rental Rate |
|-----------------------------------|-------------------|---------------------------------|
| Ground Floor Space | 2,887 | \$18.00 NNN |
| 2nd Floor | 1,907 | \$20.00 Full Service |
| 2 nd Floor – divisible | 4,578 | \$22.50 Full Service |
| 3 rd Floor – divisible | 20,752 | \$23.50 Full Service |
| 5 th Floor | 9,962 | \$23.50 Full Service |
| 6th Floor | 20,190 | \$23.50 Full Service |
| 7th Floor | 3,491 | \$24.50 Full Service |

For more information,
please contact:

MARK CARNESE

503 279 1764
mark.carnese@cushwake.com

TOM USHER

503 279 1777
tom.usher@cushwake.com

No warranty or representation, express or implied, is made as to the accuracy of the information contained herein, and same is submitted subject to errors omissions, change of price, rental or other conditions, withdrawal without notice, and to any specific listing conditions, imposed by our principals.

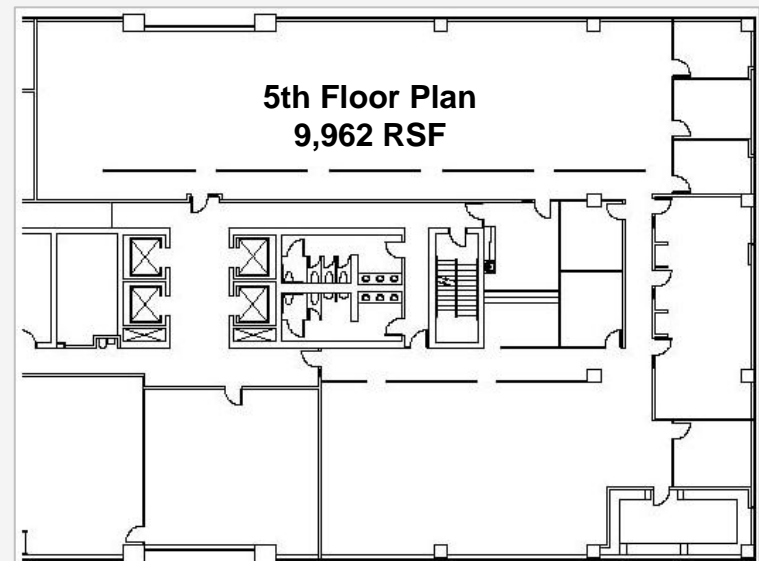
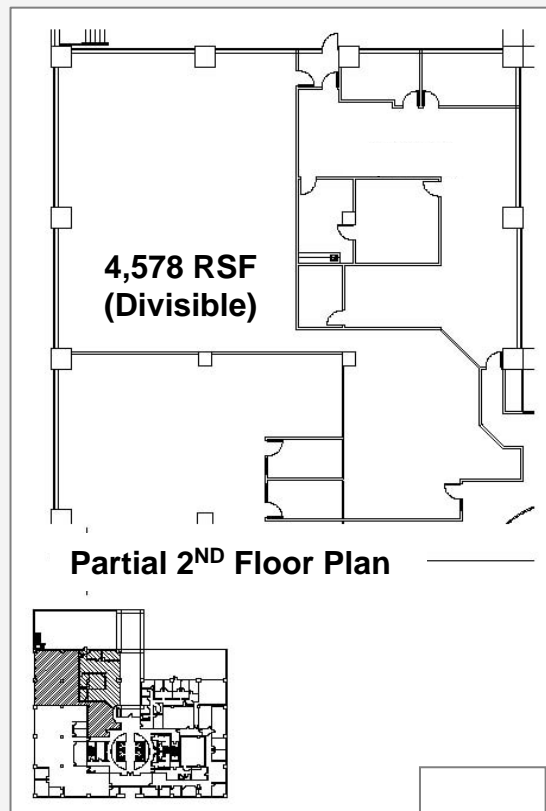
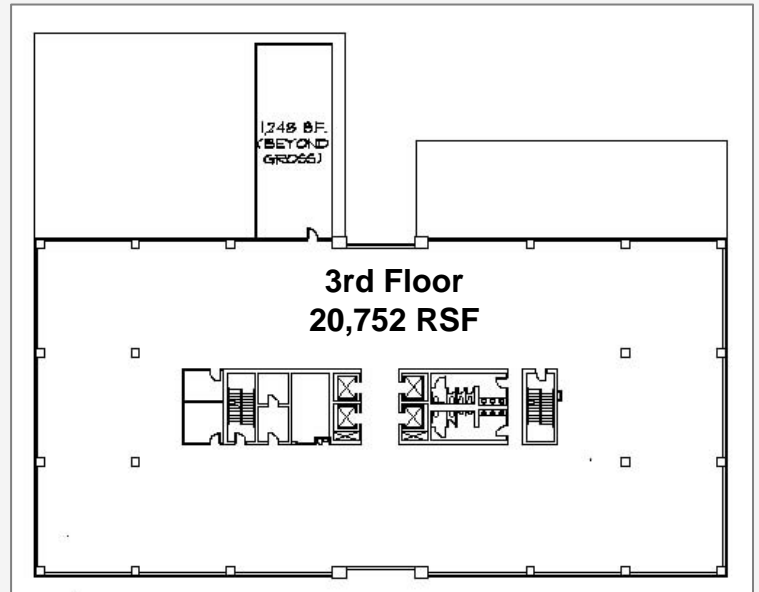
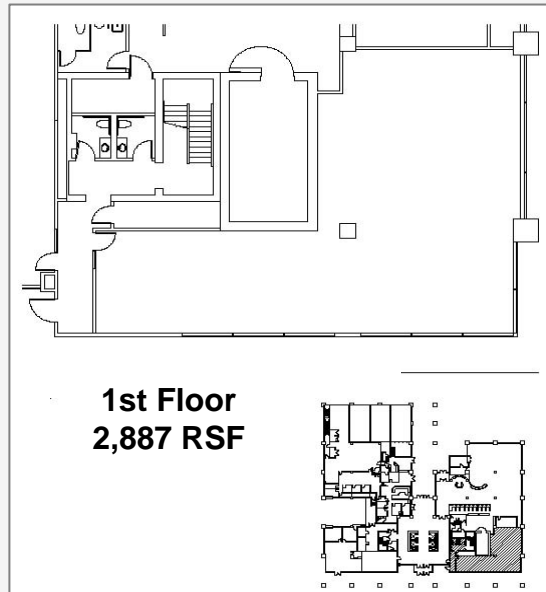


200 SW Market, Suite 200, Portland, OR 97201
503-279-1700

FOR LEASE **OFFICE**

Bank of America Financial Center

805 Broadway Street, Vancouver, WA 98660



For more information, please contact:

MARK CARNESE
503 279 1764
mark.carnese@cushwake.com

TOM USHER
503 279 1777
tom.usher@cushwake.com

No warranty or representation, express or implied, is made as to the accuracy of the information contained herein, and same is submitted subject to errors omissions, change of price, rental or other conditions, withdrawal without notice, and to any specific listing conditions, imposed by our principals.



200 SW Market, Suite 200, Portland, OR 97201
503-279-1700